

# Neighborhood News



City of Springfield

Mayor James O. Langfelder

July-September 2015 Volume 1, Issue 4

## Welcome

*On behalf of the City of Springfield's Office of Public Works, welcome to the July-September issue of Neighborhood News. This edition features great articles highlighting Bunn Park Neighborhood Association in addition to the City's Electronics Recycling program and how the Emerald Ash Borer is affecting our community. We are working on updating our Neighborhood Association contact list. If you have a new association president, website, email address or contact phone number, please contact us at [communicationsdirector@cwlp.com](mailto:communicationsdirector@cwlp.com) with the new information. This will help ensure you and your neighborhoods are receiving city news and happenings on time.*

### Yard Waste

During the summer months, yard waste is the responsibility of each resident and must be picked up by residents' individual waste hauler. Please place a yard waste sticker on the brown bags. Stickers can be found at your local hardware stores for \$1.50. Residents can drop off yard waste at Evans Recycling for a discounted rate. Please call for details.

### Branch Pick Up

Residential branch pick up will be on a three to five week pick up schedule, **May through November**. A map indicating where branch pick up will occur in your area is posted on the City's website. Visit

[www.springfield.il.us](http://www.springfield.il.us), the Sunday edition of the *State Journal-Register*.

Residents may drop off branches at Evans Recycling.

**Evans Recycling-**

**2100 J. David Jones Parkway; 217.391.0886**

**Monday-Friday, 7am-5pm and Saturday, 7am-2pm**

**Office of Public Works, 300 S. 7th St., Springfield, IL 62701  
217.789.2255 or [public.works@springfield.il.us](mailto:public.works@springfield.il.us)**

**City of Springfield's**  
**ELECTRONICS**  
**RECYCLING**  
**COLLECTION**

**Saturday, July 18, 2015**  
**8 AM - Noon**  
**Illinois State Fairgrounds**  
**Enter at Gate 11**

**Help keep electronics out of the trash and off our streets!  
Responsibly recycle TV's, computers, monitors, printers,  
scanners, cameras, DVD players, phones, and more!**

**Please visit our website:  
[www.springfield.il.us](http://www.springfield.il.us). Click on the Office of Public Works,  
Waste & Recycling  
Call: 217.789.2255  
Email: [public.works@springfield.il.us](mailto:public.works@springfield.il.us)**

**For City of Springfield Residents Only-  
Electronics from businesses are not accepted  
Please bring valid ID**

**Office of Public Works, 300 S. 7th St., Springfield, IL 62701  
217.789.2255 or [public.works@springfield.il.us](mailto:public.works@springfield.il.us)**

## Accepted Electronic Items

Cables  
Cable Boxes  
Cash Registers  
Cellular Phones  
Computers

- Computer Peripherals
- All Computer Parts

Copiers  
Cords  
CRT Monitors  
DVD Players  
External drives (all Types)  
Fax/ Scanners  
Keyboards  
Laptops  
LCD Monitors  
Mouse  
MP3/IPods/etc.  
Networking Equipment  
PDAs  
Printers

- Printer Cartridges
- Toner Cartridges

Projectors  
Satellite Dishes  
Servers  
Stereos  
TV's  
Typewriters  
UPS Units (Uninterrupted Power Supplies)  
VCRs  
Video Game Consoles

## Accepted Household Items

Blenders (Without Glass)  
Bread makers  
Cameras  
Carpet sweepers (corded or Rechargeable)  
Coffee makers (Without Glass)  
Clocks  
Curling Irons  
Electric knives  
Electric Tooth brushes  
Fans  
Food sealing equipment  
Fryers  
Hair cutters  
Hair dryers  
Heaters  
Holiday Lights  
Irons  
Land line Phones  
Massagers  
Metal tools (drills, screwdrivers, small saws, sanders, etc.)  
Microwaves  
Mixers  
Remotes  
Radios  
Shaving equipment  
Toaster Ovens  
Vacuum cleaner (without bag)

## Non Accepted Items

Salvaged units  
Bare CRT tubes  
Smoke Detectors  
Ballasts  
Capacitors  
Thermostats  
Freon Containing Items

- Air Conditioners,
- Dehumidifiers

Gas Cylinders  
Light Bulbs  
Liquids

- Items containing Liquids

Household Batteries:

- AA, AAA, D, C,

Lithium Batteries  
Medical Equipment\*  
(Any material that is considered or has come in contact with biohazard or radioactive material)  
VHS Cassette Tapes  
White Goods

- Refrigerators,
- Dish Washers,
- Stoves
- Washers / Dryers

E-Cigarettes



# NEIGHBORHOOD SPOTLIGHT

## BUNN PARK NEIGHBORHOOD

*Jamie Adair is the President of Bunn Park Neighborhood Association.*

### Where is Bunn Park located?

*Bunn Park Neighborhood is situated in south east Springfield. It is bound by Ash St. to the north, Oberlin Ave. to the south, 15th St. to the east, and 11th St. to the west.*

### What makes your neighborhood great?

*Our neighborhood is full of families and individuals that still care about one another. They care about the success of our neighborhood and the community as a whole.*

### What are some of the issues with which you struggle?

*Infrastructure is the pressing issue. We need sidewalks in many areas, alleys repaired, and storm sewer replacement due to water backups. Abandoned properties have an adverse effect on any neighborhood and addressing those are a priority. Fly dumping on vacant lots and in alleyways is an ongoing problem.*

### In what activities is the neighborhood association involved?

*The Bunn Park Neighborhood Association is very active in clean up and beautification efforts.*

### How would you like to see the neighborhood evolve in the next few years?

*Bunn Park has so many attainable goals! We would like to restart our neighborhood clean ups and replace some broken signage. I think green space, like pocket parks, would add a lot of value to our area as well. By improving some of our infrastructure, like sidewalks, we could improve Bunn Park and make it a safe and pedestrian friendly neighborhood.*

---

---

*If you would like to contact the Bunn Park Neighborhood Association, please email Jamie Adair at,*

*[bpna2@aol.com](mailto:bpna2@aol.com)*

## Don't Forget!

The City's large item pick up service is available for all residents. Receive 2 pick ups per year of up to 3 items each time - furniture, appliances, and mattresses qualify!

Call 217.528.1649 to schedule

Office of Public Works, 300 S. 7th St., Springfield, IL 62701  
217.789.2255 or [public.works@springfield.il.us](mailto:public.works@springfield.il.us)

# BE A GOOD NEIGHBOR

*Public Works considers keeping Springfield's neighborhoods safe and clean, to be a serious job. Here are a few tips for being a good neighbor this summer.*



- Grass and weeds must not exceed 10" height. Fines may be issued or grass and weeds cut at owner's expense.
- All City residents must have garbage service. Please be sure your garbage cans have lids and are removed from public property once garbage has been collected.

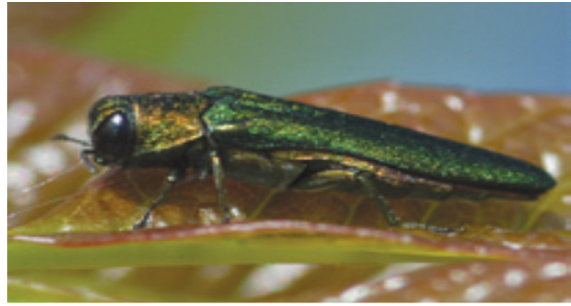


- Homeowners are responsible for maintaining the alleyway behind their house. Please keep the area free of garbage, grass and weeds, and low-hanging branches.

*If an upkeep problem exists in your neighborhood, please report it to the City's Housing Department, 217.789.2167.*

Office of Public Works, 300 S. 7th St., Springfield, IL 62701  
217.789.2255 or [public.works@springfield.il.us](mailto:public.works@springfield.il.us)

# *The Emerald Ash Borer*



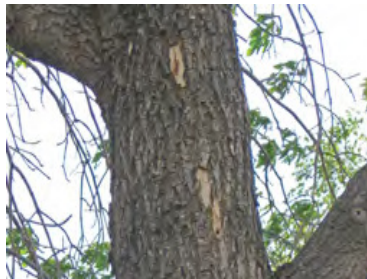
The Emerald Ash Borer, or EAB, is a metallic green beetle native to Asia, about 1/2 inch long and 1/8 inch wide. In its larval stage, EAB feeds under the bark of an ash tree, creating channels known as galleries that restrict the tree's circulatory system, eventually girdling and killing it. Transporting firewood is the main cause of the EAB spread.

EAB was identified in Springfield in fall 2014. However, the damage to ash trees suggest the beetle has been here for 2-3 years. The earlier a tree stressed by EAB is identified, the more management options there are. Once a tree has lost 50 percent or more of its canopy, treatment options become limited. Treatment options must be continued over the lifetime of the ash tree.

Springfield has approximately 3000 ash trees on public property and 6000-7000 on private property. Symptoms of an EAB infestation are as follows:



*Canopy thinning or dieback*



*Significant woodpecker damage*



*Suckers, or new growth will sprout from the trunk*

For more information or questions regarding the EAB and possible infestation, please call the Office of Public Works, 217.789.2255. For a list of certified arborists in the area, please visit, [www.treesaregood.com](http://www.treesaregood.com)

Please visit the City of Springfield's website to view a Public Service Announcement for the EAB.



Office of Public Works, 300 S. 7th St., Springfield, IL 62701  
217.789.2255 or [public.works@springfield.il.us](mailto:public.works@springfield.il.us)